

EMD
PERFORMANCE
MATERIALS

Mysterious Glow

Colorstream® Lava Red
Product Information

colorstream®



Red-hot intensity

- Intensive high chromatic red
- Extraordinary hiding performance
- Red to dark red color flop

Colorstream® lava red

Uncompromisingly dynamic

The volcanic red of Colorstream® Lava Red shows a multitude of interweaving nuances and fascinating color gradations like the energetic beauty of flowing Lava. Its fascinating tonality and interwoven hue nuances that are brought out when light hits the surface create a one of a kind interplay of red excitement. Lava Red sets the scene for the pure emotion that is evoked by the swell force of elements.

100.0% Colorstream® Lava Red
PMC¹ in dry film 18.0%
on white background

83.7% Colorstream® Lava Red
16.3% Emperor 2000
PMC¹ in dry film 21.5%
on white background

49.4% Colorstream® Lava Red
1.2% Emperor 2000
49.4% Perrindo® Maroon 179²
PMC¹ in dry film 24.5%
on white background

34.0% Colorstream® Lava Red
21.3% Pyrisma® Ambercup Orange
8.5% Xirallic® Solaris Red
23.2% Cromophtal® Red A2B³
11.2% Cinquasia® Magenta RT-243-D⁴
1.0% Special Black 100
0.8% Fanchon® Fast Yellow Y-5688⁵
PMC¹ in dry film 28.0%
on white background

fascinating styling options

How Colorstream® Lava Red manages to attract glances is no big mystery. Three powerful features come together in this unique pigment: intense, highly chromatic red, extraordinary hiding power and a red to dark red color flop.

Schematic composition of Colorstream® Lava Red



Silicon Dioxide Flake

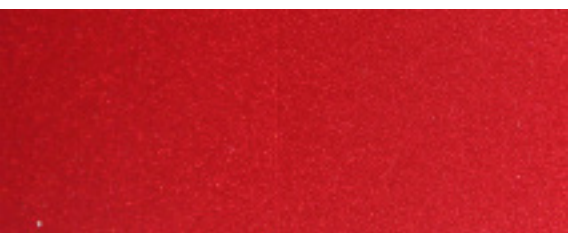
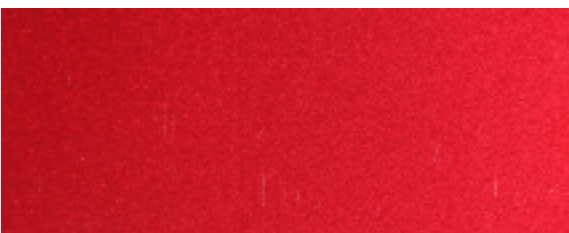
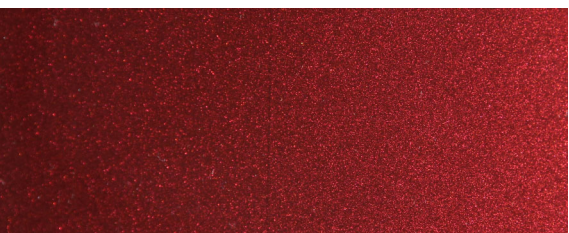
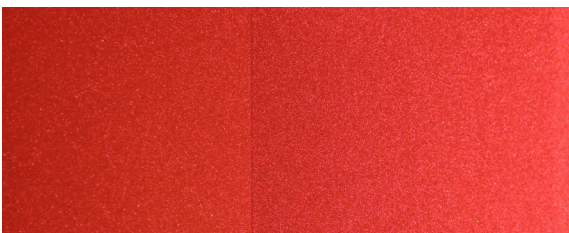
Iron Oxide

SW Surface Treatment

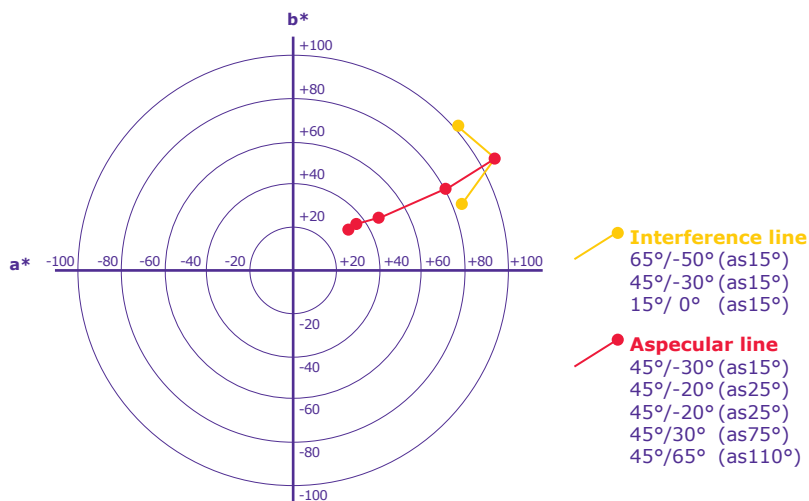


Application

Colorstream® F20-51 SW Lava Red is equipped with our SW surface treatment. Therefore it is the perfect pigment for any outdoor application. The excellent performance guarantees a long lasting intensive red for all application fields and various designs. The pigment is the perfect choice in liquid systems as well as in powder coatings.



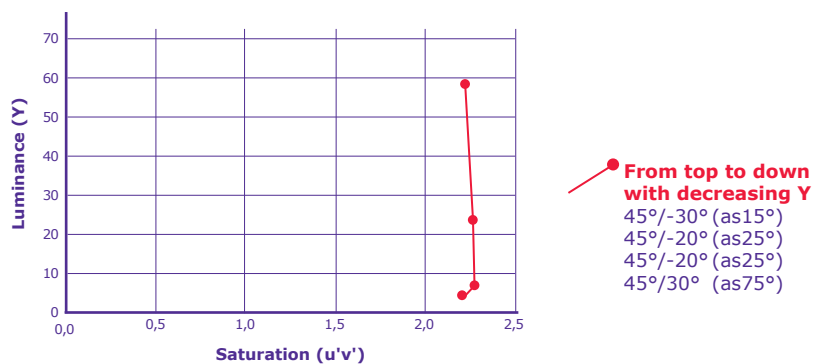
Coloristic behaviour



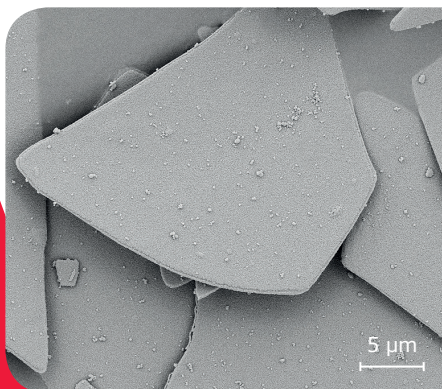
a*, b* Color coordinates of a masstone coating

(PMC¹ = 16.3%, coating thickness 15 µm, on a black substrate), angles marked according DIN 6175-2. Instrument: Datacolor FX 10 by Datacolor.

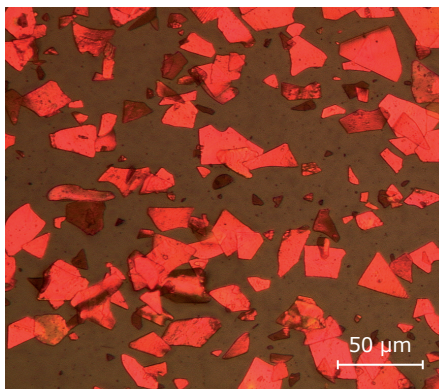
High chromatic red



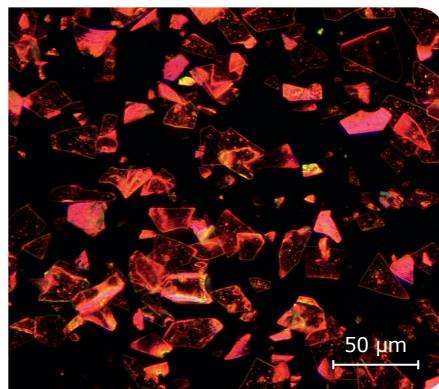
Luminance and Saturation in dependence of the aspecular angles



Typical scanning electron microscope image of Colorstream® F20-51 SW Lava Red



Typical light microscope bright field image (opt. magnification 200x) of Colorstream® F20-51 SW Lava Red



Typical light microscope dark field image (opt. magnification 200x) of Colorstream® F20-51 SW Lava Red

details

PRODUCT DATA

Ordering Information		Positioning	
Product line	Colorstream®	Color	Masstone red
Nomenclature	F20-51 SW	Sparkle	Pearl Effect
Name	Lava Red	Hiding power	Semi-transparent
Item No.	1.58217	Surface treatment	SW
Package size	150g, 1kg, 15kg	Preparation	-

TECHNICAL DATA

Physical Properties	Value	Method	Remark
Form	free-flowing powder	DIN-EN ISO 787-2	
Density	3.0 g/ml	DIN-EN ISO 787-10	
Bulk density	21 g/100 ml	DIN 53466	
Oil absorption	88 g/100 g	DIN EN ISO 787-5	
Heat stability	≤ 200 °C	In-house method	30 min. N ₂ -atmosphere
Water solubility	0.04 %	In-house method	Practically insoluble
Electrical conductivity	12 µS/cm	DIN-EN ISO 787-14	10% aqueous suspension
pH value	6.7	DIN-EN ISO 787-9	10% aqueous suspension
Particle size distribution	5-40 µm	ISO 13320-1	
d10, d50, d90	9.5, 19.5, 36.4 µm	ISO 13320-1	

WEATHERING DATA⁶

Test	Test Conditions	Test results
Humidity resistance test DIN EN ISO 6270-2	PMC ¹ : 4.0% Colorstream® F20-51 SW Lava Red Duration: 240 h, Temperature: 40°C Relative humidity: 100%	Gloss after 24 h (20°): 100% DOI after 24 h: 100% Cross hatch after 1 h: 0
Accelerated weathering SAE J 2527	PMC ¹ : 4.0% Colorstream® F20-51 SW Lava Red black reduction Duration: 4000 h	Gloss after 4000 h: 96% Color change ΔE after 4000 h ⁷ : 25°/ 2.51; 45°/ 2.50

¹ Pigment Mass Concentration (PMC): Mass pigment based on total mass coating

² Perrindo® is a trademark of Sun Chemical Corporation, Parsippany, USA


³ Chromophtal® is a trademark of BASF SE, Ludwigshafen, Germany

⁴ Cinquasia® is a trademark of BASF SE, Ludwigshafen, Germany

⁵ Fanchon® is a trademark of Sun Chemical Corporation, Parsippany, USA

⁶ Test System: 2-coat OEM thermosetting paint

⁷ BYK-mac, Byk Gardner GmbH



Products are warranted to meet the specifications set forth on their label/ packaging and/or certificate of analysis at the time of shipment or for the expressly stated duration. EMD provides information and advice on application technologies and relevant regulations based upon its current knowledge and opinion. EMD MAKES NO REPRESENTATION OR WARRANTY OF ANY KIND, EXPRESS OR IMPLIED, INCLUDING MERCHANTABILITY OR FITNESS FOR A PARTICULAR USE REGARDING OUR PRODUCTS, THEIR APPLICATION OR ANY INFORMATION PROVIDED IN CONNECTION THEREWITH. EMD shall not in any event be liable for incidental, consequential, indirect, exemplary or special damages of any kind resulting from any use or failure of the products. Customer is responsible for and must independently determine the suitability of EMD's products for its products, intended use and processes. The foregoing information and suggestions are also provided without warranty of non-infringement as to intellectual property rights of third parties and shall not be construed as any inducement to infringe the rights of third parties. Customer shall be responsible for obtaining any applicable third party intellectual property licenses. All sales are subject to EMD's complete Terms and Conditions of Sale. Prices are subject to change without notice. EMD reserves the right to discontinue products without prior notice.

EMD, EMD Performance Materials, the vibrant M, Colorstream®, Xirallic® and Pyrisma® are trademarks of Merck KGaA, Darmstadt, Germany. All other trademarks pertain to their proprietors.

EMD Performance Materials Corp.

Pigments & Functional Materials
Decorative Materials
One International Plaza Suite 300
Philadelphia, PA 19113, USA
Phone +1 484-652-5642
Fax +1 484-652-5665
emd-pigments.com
E-Mail: coatings@emdgroup.com
A subsidiary of Merck KGaA, Darmstadt, Germany

Merck KGaA

Performance Materials
Pigments & Functional Materials
Decorative Materials
Frankfurter Str. 250
64293 Darmstadt, Germany
Phone +49 (0) 6151 72-2198
Fax +49 (0) 6151 72-7684
emd-pigments.com
E-Mail: coatings@emdgroup.com

Merck Performance Materials Ltd.

Pigments & Functional Materials
Decorative Materials
ARCO Tower, 5F
8-1, Shimomeguro 1-chome
Meguro-ku
Tokyo 153-8927, Japan
Phone +81 3 5434-4763
Fax +81 3 5434-4708
emd-pigments.com
E-Mail: coatings@emdgroup.com
A subsidiary of Merck KGaA, Darmstadt, Germany

