

EMD
PERFORMANCE
MATERIALS

shine bright

Iriodin® Icy White Lightning
Product Information



iriodin®

fascinating
pure white

elegant
lustre

- * Pure bluish-white color
 - * No impurities in the substrate
 - * Elegant lustre effect
 - * Excellent performance in outdoor applications



Iriodin®

icy white lightning

The power of pure fascination

Snow catches the light as it softly falls. Frosty flakes sparkle on the surface like countless diamonds. The bright light draws out the ice-cold beauty of wintry landscapes and of Iriodin® Icy White Lightning. First its bright cool brilliance draws the attention then the elegant bluish-white shimmer hits the eye. Prepare yourself for striking results in stunning styling options.

Schematic composition of Iriodin® 96107 SW Icy White Lightning



Synthetic Mica

Metal oxides

Surface Treatment

Experience a world of fresh, gleaming silver-white with Iriodin® Icy White Lightning - a pearl lustre pigment based on a synthetic mica substrate. This pigment composition leads to a neutral color with a slightly bluish tint. Therefore it is the perfect choice for clear three-coat white stylings and cool blues. Expand the styling possibilities of your coatings with a bright flash of brilliance. Make nature envious!

Application

Iriodin® 96107 SW Icy White Lightning is equipped with our SW surface treatment and therefore is the perfect pigment for any outdoor application. The excellent performance guarantees a long lasting purely white impression for all application fields and various designs. The pigment is easy to disperse and is the perfect choice in liquid systems as well as in powder coatings.

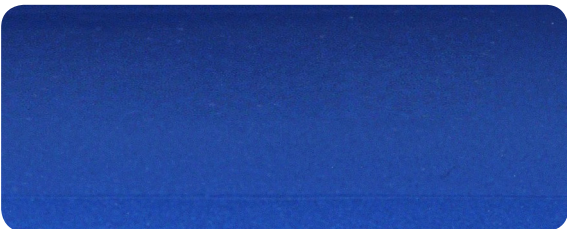
100.0% Iriodin® Icy White Lightning
on white background
PMC¹ in dry film 18.0%

100.0% Iriodin® Icy White Lightning
on black background
PMC¹ in dry film 18.0%

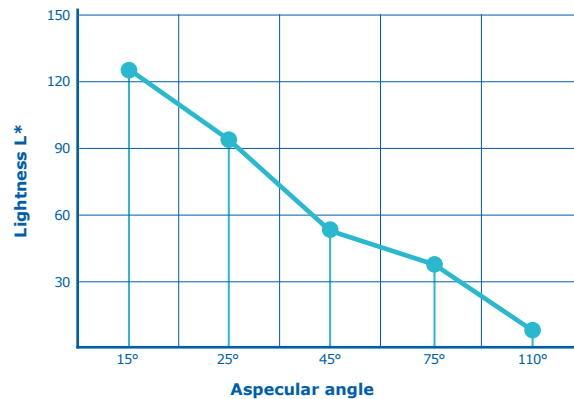
49.8% Iriodin® Icy White Lightning
49.8% TiO₂ Kronos® 2190²
0.4% Monolite® Blue 3R³
PMC¹ in dry film 20.1%

62.4% Iriodin® Icy White Lightning
18.8% Monolite® Blue 3R³
18.8% Heliogen® Blue L 7101F⁴
PMC¹ in dry film 16.0%



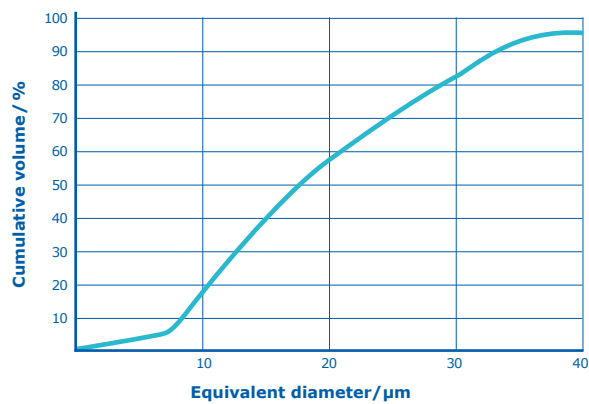


Lightness

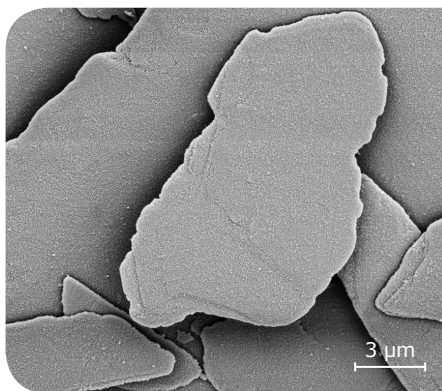


Dependence of Lightness L* on the aspecular angle

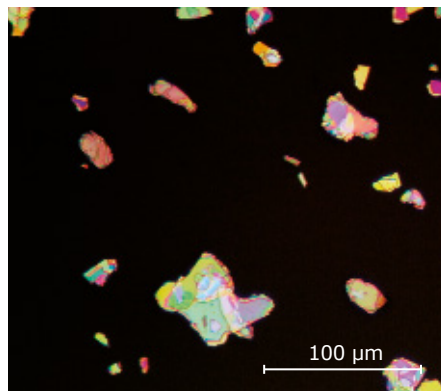
Particle Size Distribution



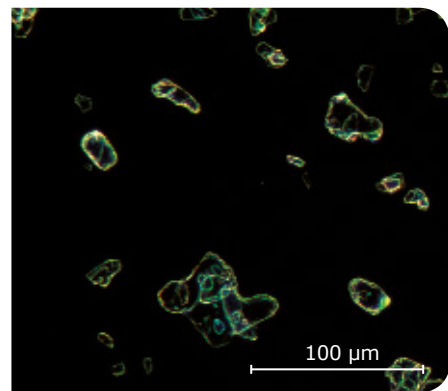
Cumulative Particle Size Distribution measured by Laser diffraction



Typical scanning electron microscope image of Iridin® 96107 SW Icy White Lightning



Typical light microscope bright field image (opt. magnification 200x) of Iridin® 96107 SW Icy White Lightning



Typical light microscope dark field image (opt. magnification 200x) of Iridin® 96107 SW Icy White Lightning

details

PRODUCT DATA

Ordering Information		Positioning	
Product line	Iriodin®	Color	Silver-white
Nomenclature	96107 SW	Sparkle	Pearl Effect
Name	Icy White Lightning	Hiding power	Transparent
Item No.	1.41425	Surface treatment	SW
Package size	150g, 1kg, 20kg	Preparation	-

TECHNICAL DATA

Physical Properties	Value	Method	Remark
Form	free-flowing powder	DIN-EN ISO 787-2	
Density	3.0 g/ml	DIN-EN ISO 787-10	
Bulk density	22 g/100 ml	DIN 53466	
Heat stability	≤ 230 °C	In-house method	30 min. N ₂ -atmosphere
Water solubility	practically insoluble	In-house method	
Electrical conductivity	30.0 µS/cm	DIN-EN ISO 787-14	10% aqueous suspension
pH value	9.9	DIN-EN ISO 787-9	10% aqueous suspension
Particle size distribution	5-40 µm	ISO 13320-1	
d10, d50, d90	8.7, 17.7, 33.7 µm	ISO 13320-1	

WEATHERING DATA⁵

Test	Test Conditions	Test results
Humidity resistance test DIN EN ISO 6270-2	PMC ¹ : 4.0% Iriodin® 96107 SW Icy White Lightning Duration: 240 h Temperature: 40°C Relative humidity: 100%	Gloss after 24 h (20°): 98.4% DOI after 24 h: 100% Cross hatch after 1 h: 0
Accelerated weathering SAE J 2527	PMC ¹ : 4.0% Iriodin® 96107 SW Icy White Lightning, black reduction Duration: 4000 h	Gloss after 4000 h: 94% Color change ΔE after 4000 h ⁶ : 25°/ 1.00; 45°/ 0.47

The information on this page is typical technical data to characterize the pigment. These values are not meant as specifications and they do not have binding character. The product specification is available separately, on request.

¹ Pigment Mass Concentration (PMC): Mass pigment based on total mass coating

² Kronos® is a trademark of Kronos B.V., Rotterdam, Belgium

³ Monolite® is a trademark of Heubach GmbH, Langelsheim, Germany

⁴ HelioGen® is a trademark of BASF SE, Ludwigshafen, Germany

⁵ Test System: 2-coat OEM thermosetting paint

⁶ Measured with BYK-mac, Byk Gardner GmbH

Products are warranted to meet the specifications set forth on their label/packaging and/or certificate of analysis at the time of shipment or for the expressly stated duration. EMD provides information and advice on application technologies and relevant regulations based upon its current knowledge and opinion. EMD MAKES NO REPRESENTATION OR WARRANTY OF ANY KIND, EXPRESS OR IMPLIED, INCLUDING MERCHANTABILITY OR FITNESS FOR A PARTICULAR USE REGARDING OUR PRODUCTS, THEIR APPLICATION OR ANY INFORMATION PROVIDED IN CONNECTION THEREWITH. EMD shall not in any event be liable for incidental, consequential, indirect, exemplary or special damages of any kind resulting from any use or failure of the products. Customer is responsible for and must independently determine the suitability of EMD's products for its products, intended use and processes. The foregoing information and suggestions are also provided without warranty of non-infringement as to intellectual property rights of third parties and shall not be construed as any inducement to infringe the rights of third parties. Customer shall be responsible for obtaining any applicable third party intellectual property licenses. All sales are subject to EMD's complete Terms and Conditions of Sale. Prices are subject to change without notice. EMD reserves the right to discontinue products without prior notice.

EMD, EMD Performance Materials, the vibrant M and Iriodin® are trademarks of Merck KGaA, Darmstadt, Germany. All other trademarks pertain to their proprietors.

EMD Performance Materials Corp.

Pigments & Functional Materials
Decorative Materials
One International Plaza Suite 300
Philadelphia, PA 19113, USA
Phone +1 484-652-5642
Fax +1 484-652-5665
emd-pigments.com
E-Mail: coatings@emdgroup.com
A subsidiary of Merck KGaA,
Darmstadt, Germany

Merck KGaA

Performance Materials
Pigments & Functional Materials
Decorative Materials
Frankfurter Str. 250
64293 Darmstadt, Germany
Phone +49 (0) 6151 72-2198
Fax +49 (0) 6151 72-7684
emd-pigments.com
E-Mail: coatings@emdgroup.com

Merck Performance Materials Ltd.

Pigments & Functional Materials
Decorative Materials
ARCO Tower, 5F
8-1, Shimomeguro 1-chome
Meguro-ku
Tokyo 153-8927, Japan
Phone +81 3 5434-4763
Fax +81 3 5434-4708
emd-pigments.com
E-Mail: coatings@emdgroup.com
A subsidiary of Merck KGaA,
Darmstadt, Germany

